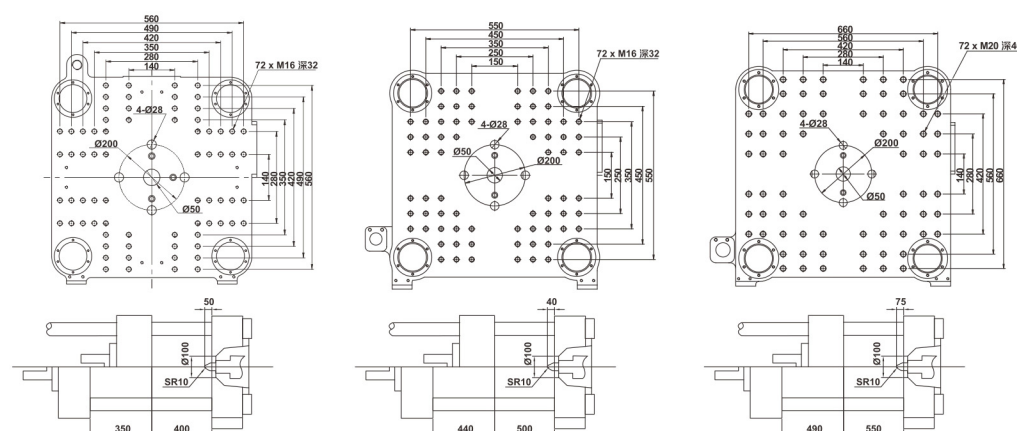
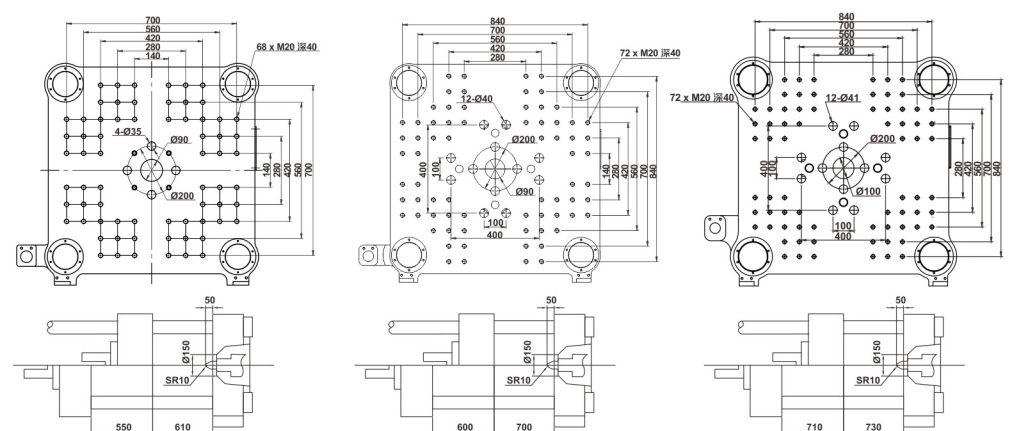


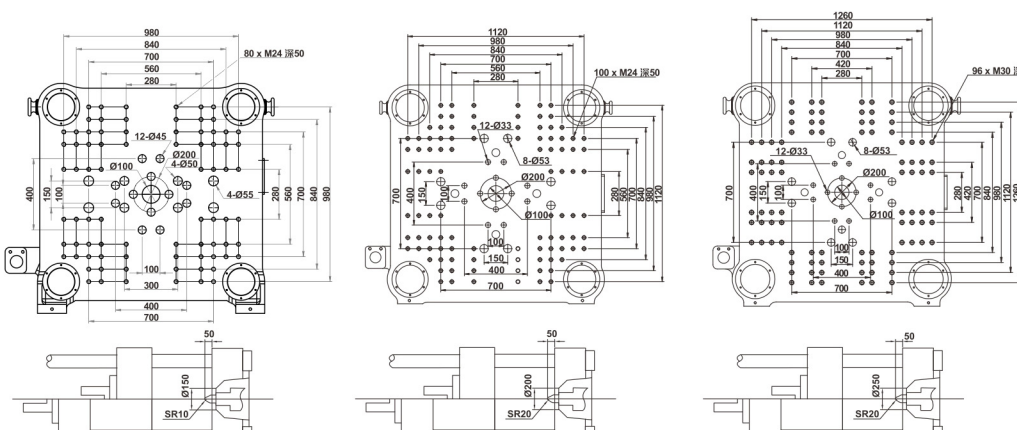
模板尺寸 Platen Dimensions



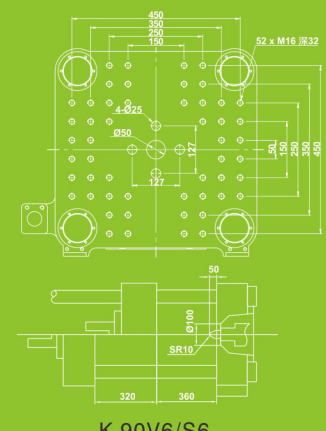
K-126V6/S6 K-160V6/S6 K-200V6/S6



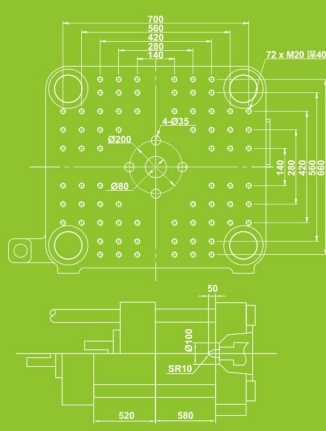
K-288V6/S6 K-330V6/S6 K-400V6/S6



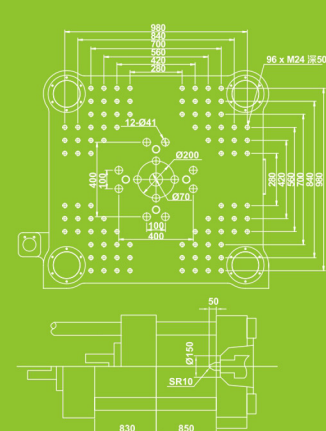
K-560V6/S6 K-680V6/S6 K-850V6/S6



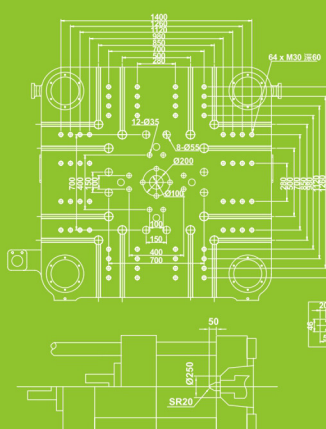
K-90V6/S6



K-250V6/S6



K-500V6/S6



K-1000V6/S6



www.powerjet.cn | www.powerjetgroup.com



K series HIGH SPEED INJECTION MOLDING MACHINE

快速注塑机



欢迎关注宝捷微信
了解最新资讯



宝捷精密机械有限公司
POWERJET PLASTIC MACHINERY CO., LTD.

厂址: 中国·广东省佛山市南海区狮山工业园B区博爱东路12号 邮编: 528225
ADD: No. 12, BoAi Road East, Zone B, Shishan Industrial Park, Nanhai, Foshan, Guangdong, P. R. China
Service line: 86-400 830 0005 | TEL: 86-757-86697806 | FAX: 86-757-86697861 | E-mail: powerjet@126.com

宝捷集团2016年4月印

宝捷精机
PowerJet

K series HIGH SPEED INJECTION MOLDING MACHINE

快速注塑机

Faster injection speed & charging speed
Better stability
Higher efficiency

更快的注射速度和熔胶速度，
更好的稳定性，
更高的生产效率。



应用 Application



参数 Parameter

说明	DESCRIPTION	单位UNIT	K-90V6/S6			K-126V6/S6			K-160V6/S6			K-200V6/S6			K-250V6/S6			K-288V6/S6			K-330V6/S6			K-400V6/S6			K-500V6/S6			K-560V6/S6			K-680V6/S6			K-850V6/S6			K-1000V6/S6					
国际公认型号	International size rating		900-275			1260-395			1600-551			2000-853			2500-1226			2880-1226			3300-1734			4000-2274			5000-3207			5600-3207			6800-4953			8500-6201			10000-7645					
锁模单元 CLAMPING UNIT																																												
锁模力	Clamping force	KN	900			1260			1600			2000			2500			2880			3300			4000			5000			5600			6800			8500			10000					
开模行程	Opening stroke	mm	320			350			440			490			520			550			600			710			830			860			930			1030			1150					
模板最大开距	Max.daylight	mm	680			750			940			1040			1100			1160			1300			1440			1680			1740			1870			2080			2350					
模板外形尺寸	Platen size	mm×mm	540×540			610×610			705×705			775×755			800×760			850×850			985×985			1050×1050			1150×1120			1250×1220			1340×1340			1550×1500			1700×1700					
导柱内距	Space between bars	mm×mm	360×360			410×410			460×460			510×510			560×490			610×610			670×670			740×720			820×780			860×860			930×930			1030×1030			1160×1160					
最大模厚	Max.mold height	mm	360			400			500			550			580			610			700			730			850			880			940			1050			1200					
最小模厚	Min.mold height	mm	130			145			160			230			230			280			300			300			300			300			350			380			500					
顶针行程	Ejector stroke	mm	100			100			140			140			145			145			180			210			220			240			265			300			350					
顶出力	Ejector force	KN	34			42			49			65			77			77			77			110			135			135			184			290			290					
注射单元 INJECTION UNIT																																												
螺杆直径	Screw diameter	mm	30	36	42	36	40	45	42	46	52	46	52	60	52	60	68	52	60	68	75	68	75	83	90	100	75	83	90	100	85	90	100	90	100	110	100	110	120					
螺杆长径比L/D	Screw L/D ratio		20	20	17	23	20	18.2	22	20.5	18	23	20	17.5	21	21	18.5	21	21	18.5	21	21	19	21	21	19	21	21	21	21	21	21	21	21	21	21	21	21	21	21				
注射压力	Injection pressure	Mpa	243	169	124	187	152	120	195	162	127	210	164	123	206	155	121	206	155	121	198	154	127	190	156	128	109	186	152	129	105	186	152	129	105	194	173	140	207	168	139	187	155	130
理论注射容积	Shot volume	cm ³	113	163	222	193	238	302	284	435	407	520	693	594	791	1017	594	791	1017	876	1126	1370	1198	1458	1786	2099	1722	2110	2481	3063	1722	2110	2481	3063	2554	2863	3534	2990	3691	4667	4084	4942	5881	
实际注射量(PS)	Shot weight(PS)	g(克)	106	153	208	173	213	270	267	320	409	383	489	651	558	744	956	558	744	956	823	1058	1287	1066	1298	1590	1868	1533	1878	2208	2725	1533	1878	2208	2725	2273	2548	3146	2661	3285	3976	3635	4398	5234
		OZ(盎司)	3.7	5.4	7.2	5.7	7.5	9.5	9.4	11.3	14.4	13.5	17.2	23	19.7	26.2	33.7	19.7	26.2	33.7	29	37.3	45.4	37.6	45.8	56.1	65.9	54	66.3	77.9	96.1	54	66.3	77.9	96.1	80	89.9	111	93.9	115.9	140.3	128	155	185
注射速率(PS)	Injection rate	g/s	68	97	133	109	135	171	133	158	202	176	224	299	230	307	397	230	307	397	269	346	421	351	427	523	615	438	536	630	778	438	536	630	778	528	621	766	619	764	924	702	850	1147
塑化能力(PS)	Plasticizing capacity	g/s	16	23	32	20	31	42	24	34	45	40	54	78	46	59	76	46	59	76	63	74	90	69	83	95	105	91	107	117	125	91	107	117	125	91	114	125	97	115	143	98	122	139
螺杆行程	Screw stroke	mm	160			190			205			245			280			280			310			330			390			390			450			470			520					
螺杆转速	Screw speed	rpm	227			240			256			245			210			210			193			160			160			160			179			160			132					
动力/电热 POWER UNIT																																												
油压系统压力	Hydraulic system pressure	Mpa	16			16			16			16			16			16			16			16			16			16			16			16			16					
油泵电机功率	Pump motor power	KW	11			15			18.5			22			30			30			37			45			55			55			37+37			55+37			55+55					
加热功率	Heater power	KW	6			7.5			9.8			11.5			13.8			13.8			18			22			28			28			38			42			45					
其他 GENERAL																																												
油箱容量	Oil tank capacity	L	180			210			260			340			420			420			460			630			810			810			1000			1300			1600					
理论机重	Machine weight	Ton	3			4			4.6			6			7.8			8.5			11			15			19			19			33			45			52					
外形尺寸(L×W×H)	Machine dimensions	m×m×m	4×1.2×1.7			4.4×1.2×1.8			4.8×1.3×1.8			5.3×1.4×2.1			5.7×1.5×2.2			6.1×1.53×2.2			6.8×1.62×2.3			7.2×1.65×2.3			6.7×2.1×2.3			8.5×2.3×2.3			9.1×2.4×2.5			10.5×2.6×2.7			11.0×2.9×3.1					

备注: 本公司根据产品提升的需要, 可对技术参数、部份元件配置及服务内容进行更改, 恕不另行通知。

Remarks: According to upgrading of machine, we will change technical parameters, configuration of some parts and service's items without further notice.